



SUMARI[®]

insecticide

SCAN ME



Scan QR code or visit mgk.com/sumari-insecticide to see resources and additional information

Strengthen Your Rotation. Simplify Your Control.

Engineered to Eliminate with Dual Modes of Action

Sumari[®] Insecticide is a non-repellant that delivers convenient and effective premise control with dual modes of action (Group 4 and 7C) for long-lasting control of ants, cockroaches, house flies and other listed insects. With no need to tank mix multiple products, Sumari insecticide is an excellent rotational option to pyrethroids to help you protect your operation.

Features and Benefits

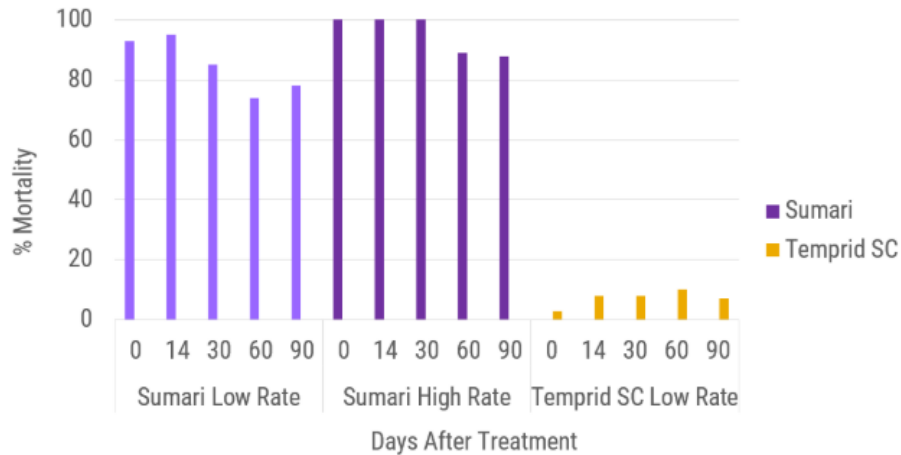
- Premise insecticide for use in and around livestock facilities
- Kills house ants, cockroaches, house flies and other listed insects
- Provides 90-day residual control on ants and kills the ant colony to prevent re-infestation
- Formulated with NyGuard[®] IGR for dual modes of action
- Low rate of Sumari insecticide provides pyriproxyfen at levels comparable to NyGuard tank mix applications

Packaging

- 1 quart unit (6 per case)
- 1 gallon unit (2 per case)



German Cockroach Mortality on Treated Ceramic Tiles

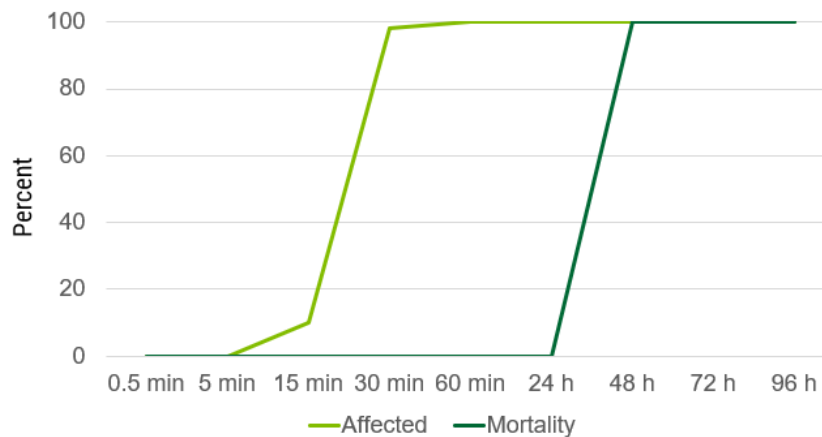


Source: Sumitomo Chemical Co., Ltd. (2022).

What does this data mean for your business?

Sumari is an all-in-one premise insecticide for controlling cockroach infestations. Sumari provides long-lasting residual control of German cockroaches and is effective across a wide range of surfaces and species.

Effect of Sumari Insecticide on House Flies



Source: Tianyun (Steven) Su, PhD.

What does this data mean for your business?

Sumari serves as an excellent rotational option for pyrethroid products commonly used in and around livestock areas to control flies. Apply Sumari to fly resting and breeding sites, including barn walls, manure stacking pads, flush pits and other areas in and around livestock facilities.