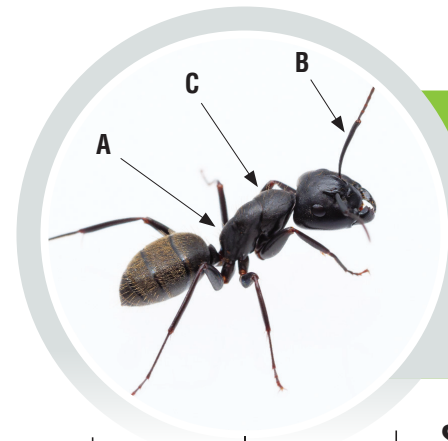


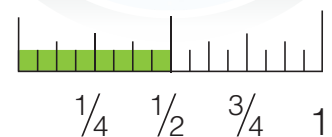
# ID YOUR ENEMY

Ants can be difficult to control, but success starts with correct species identification. Distinguish between ants by examining not only size but other key characteristics as well.



## Carpenter Ants

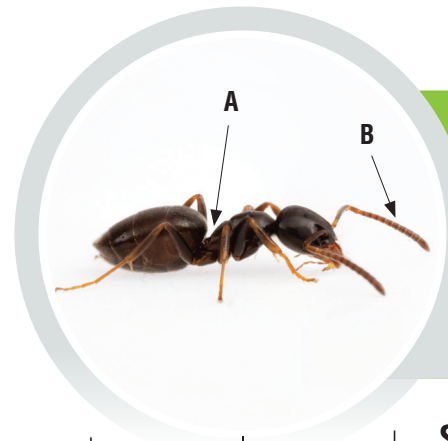
*Camponotus spp.*



**SIZE:**  
1/4- to 1/2-inch in length

### CHARACTERISTICS:

- A** | One node
- B** | Antennae with 12 segments, no club
- C** | Evenly rounded thorax
- > Workers vary in color but are often black or bi-colored red and black



## Odorous House Ants

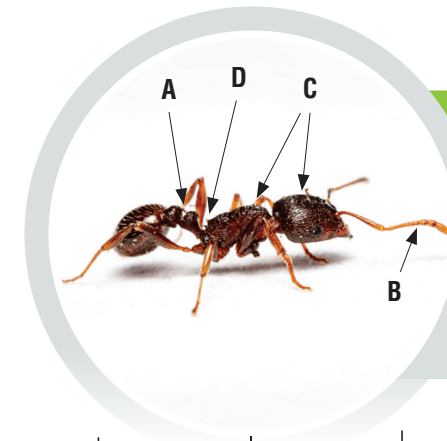
*Tapinoma sessile*



**SIZE:**  
1/8-inch in length

### CHARACTERISTICS:

- A** | One node, flattened and hidden from view
- B** | Antennae with 12 segments, no club
- > Workers are black to brownish black
- > Emit an odor of rotten coconut or blue cheese when crushed



## Pavement Ants

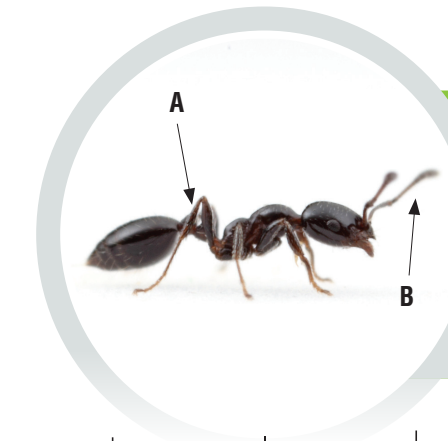
*Tetramorium spp.*



**SIZE:**  
1/8-inch in length

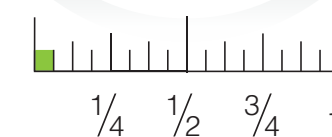
### CHARACTERISTICS:

- A** | Two nodes
- B** | Antennae with 12 segments, club with 3 segments
- C** | Head and thorax are sculpted with numerous parallel grooves
- D** | Pair of spines on pronotum
- > Workers are dark brown to black



## Little Black Ants

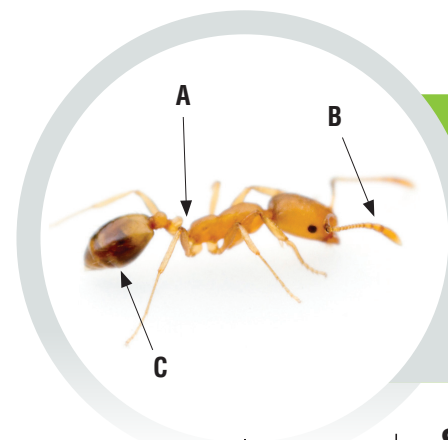
*Monomorium minimum*



**SIZE:**  
1/16-inch in length

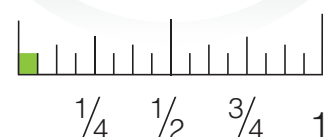
### CHARACTERISTICS:

- A** | Two nodes
- B** | Antennae with 12 segments, club with 3 segments
- > Workers are shiny black to brownish black



## Pharaoh Ants

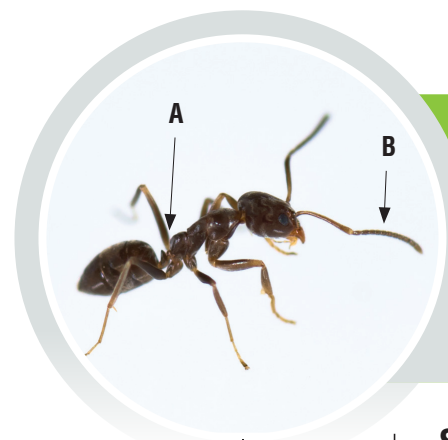
*Monomorium pharaonis*



**SIZE:**  
1/16-inch in length

### CHARACTERISTICS:

- A** | Two nodes
- B** | Antennae with 12 segments, club with 3 segments
- C** | Tip of the abdomen is darkened
- > Workers are yellowish light brown to reddish



## Argentine Ants

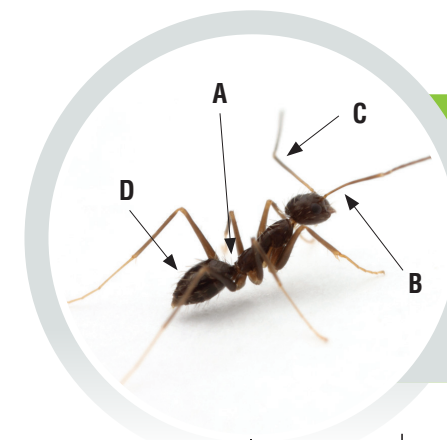
*Linepithema humile*



**SIZE:**  
1/8-inch in length

### CHARACTERISTICS:

- A** | One node
- B** | Antennae with 12 segments, no club
- > Workers are light to dark brown
- > Emit a musty odor when crushed



## Black Crazy Ants

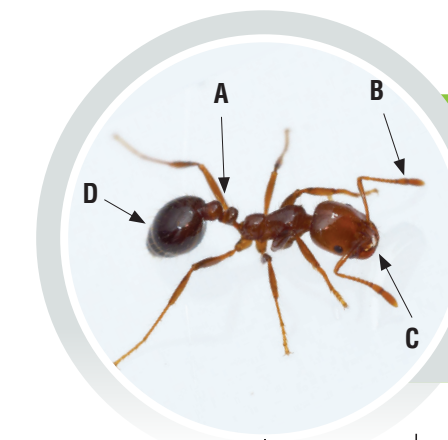
*Paratrechina longicornis*



**SIZE:**  
1/8-inch in length

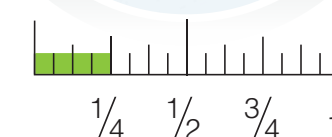
### CHARACTERISTICS:

- A** | One node
- B** | Antennae with 12 segments, no club
- C** | Long scape (first antennae segment)
- D** | Body covered in coarse, long hairs
- > Workers are black



## Red Imported Fire Ants

*Solenopsis invicta*



**SIZE:**  
1/8- to 1/4-inch in length

### CHARACTERISTICS:

- A** | Two nodes
- B** | Antennae with 10 segments, club with 2 segments
- C** | Mandibles have 4 distinct teeth
- > Workers have a reddish head and thorax with a brown/black abdomen (**D**)