

Onslaught POWERSHOT

Onslaught PowerShot is a ready-to-use aerosol with a powerful jet spray that kills listed pests without leaving an oily residue.

- Water-based, non-staining formula
- Kills insects returning to treated nest
- Powerful jet spray up to 20 ft
- Kills wasps, yellowjackets, hornets, mud daubers and scorpions on contact
- Rapid knockdown and kill

PRODUCT SPECIFICATIONS

Key Target Pest(s)	Wasps, yellowjackets, hornets, spiders and scorpions
Signal Word	Caution
Form	Aerosol
Active Ingredient(s)	Pyrethrins; Esfenvalerate; Piperonyl butoxide; MGK-264
Class of Chemistry	Pyrethrins/pyrethroids (3A), dual synergized
Activity	Knockdown, kills by contact, residual, synergist
Mode of Action	Sodium channel modulator; Interference with P-450 mediated detoxification system
Flammability	Contents under pressure. Do not store near heat or open flame.
Odor	Sweet, slightly unpleasant
PPE Requirements	None listed
Retreat Interval	None listed
Mix or Dilute In	Ready to use
Shelf Life	3 years or more if stored in ideal conditions



Packaging

- 15 oz aerosol can (12 per case)

Use Sites

- Outdoor residential man-made structures

Application Methods

- Structural treatments
- Perimeter treatments
- Spot treatments

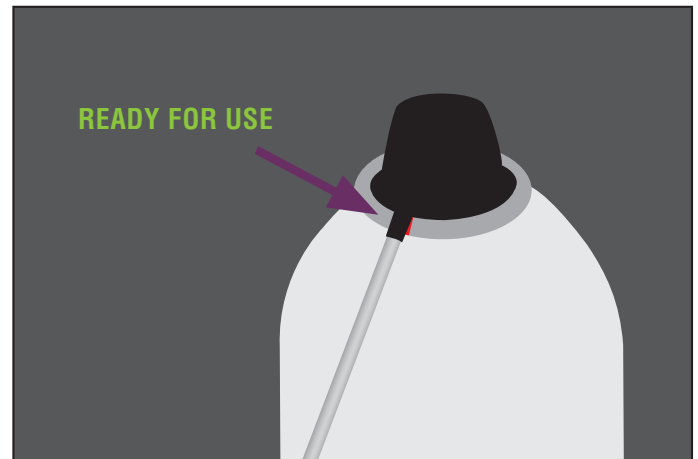
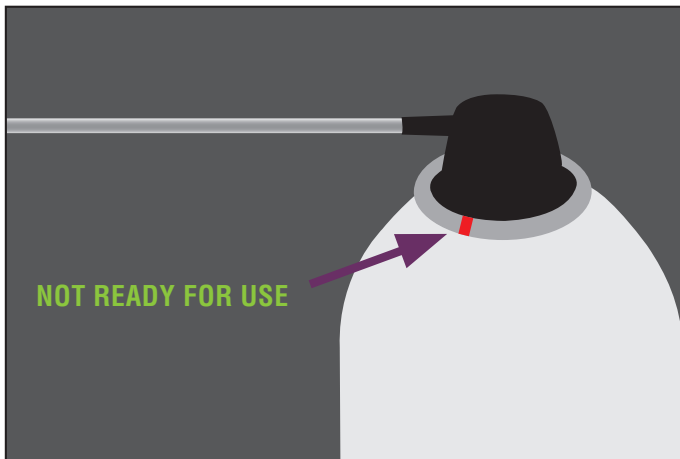
Application Equipment

- Fits in standard aerosol devices



Best Practices When Using Onslaught PowerShot

- Reaches nests under roof eaves, around carports, doorways and window frames.
- This product is non-staining to most building surfaces and residential structures, including home siding and shingles. Test in an inconspicuous area and observe for potential staining.
- Prior to application, ensure that the actuator is lined up by matching the indicator mark with the nozzle, as shown below.



Tips and tricks from MGK Technical Department

- Be safe! When possible, treat when insects are less active and more likely to be in the nest, such as dawn or dusk.
- Don't rush! Take some time to observe flight patterns. There may be more than one entrance to the nest. Make slow movements and remain steady.
- When treating nests, spray for 2 seconds to ensure thorough coverage.
- The aerosol can is lightweight and can be used one-handed, which is useful for ladder applications. Use the straw attachment for targeted applications in cracks and crevices.

Always read and follow all label instructions.

SCAN ME



Scan for more resources or
visit [MGK.com/PowerShot](https://www.mgk.com/PowerShot).

For any medical or safety questions, concerns, or incident reports, call 1-888-740-8712.